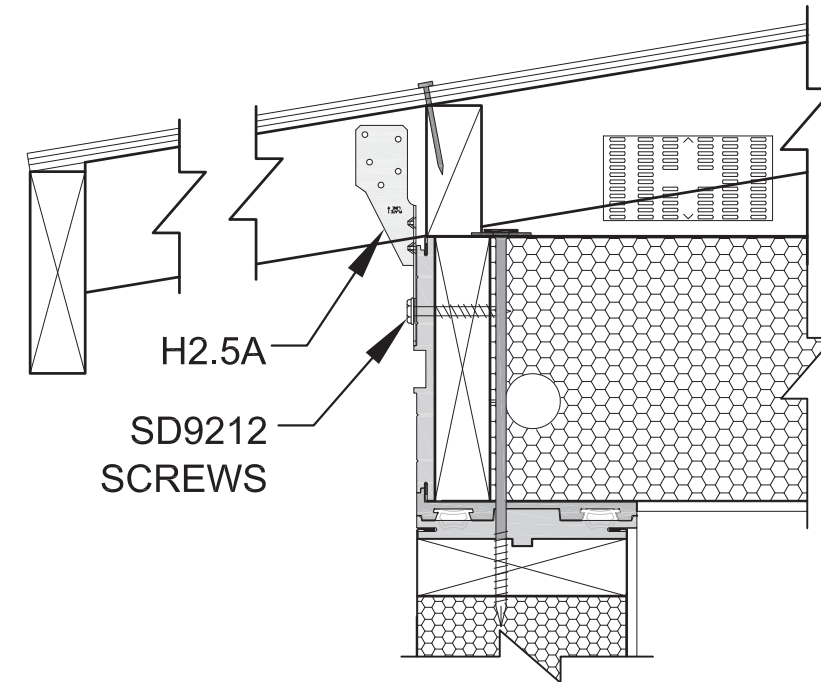
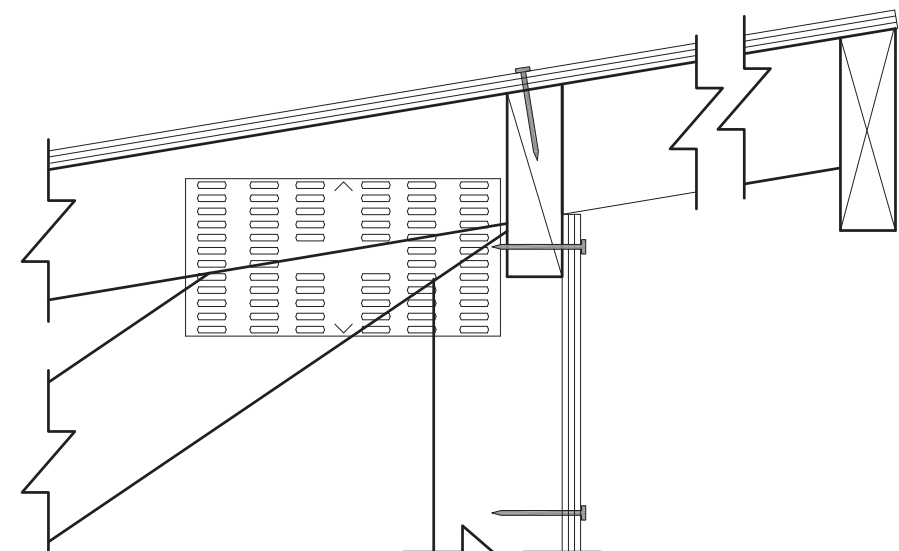


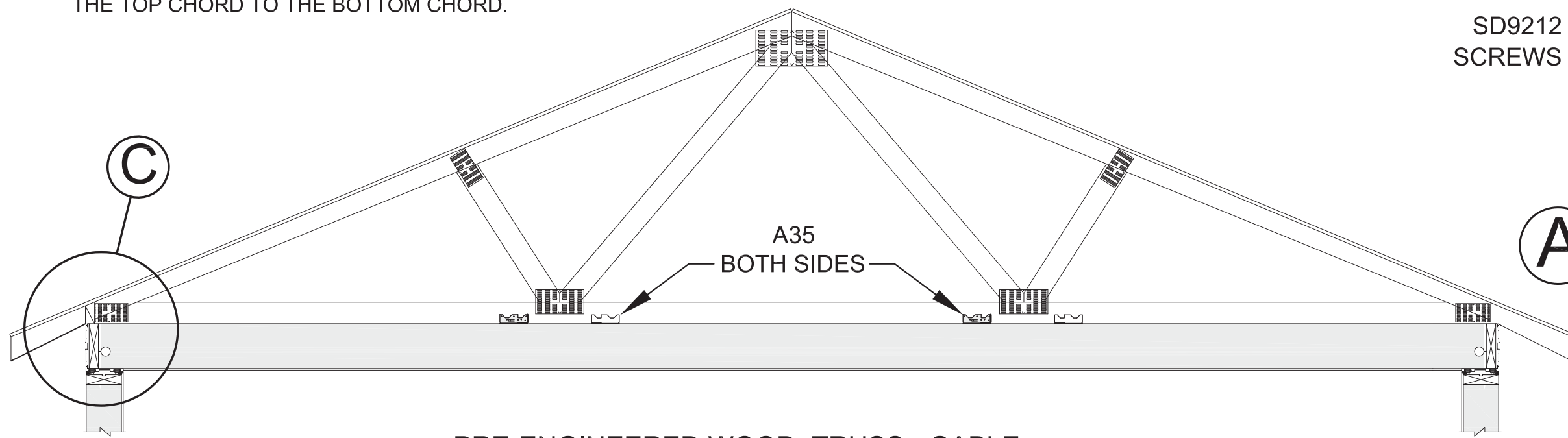
PRE-ENGINEERED WOOD TRUSS - MONOSLOPE



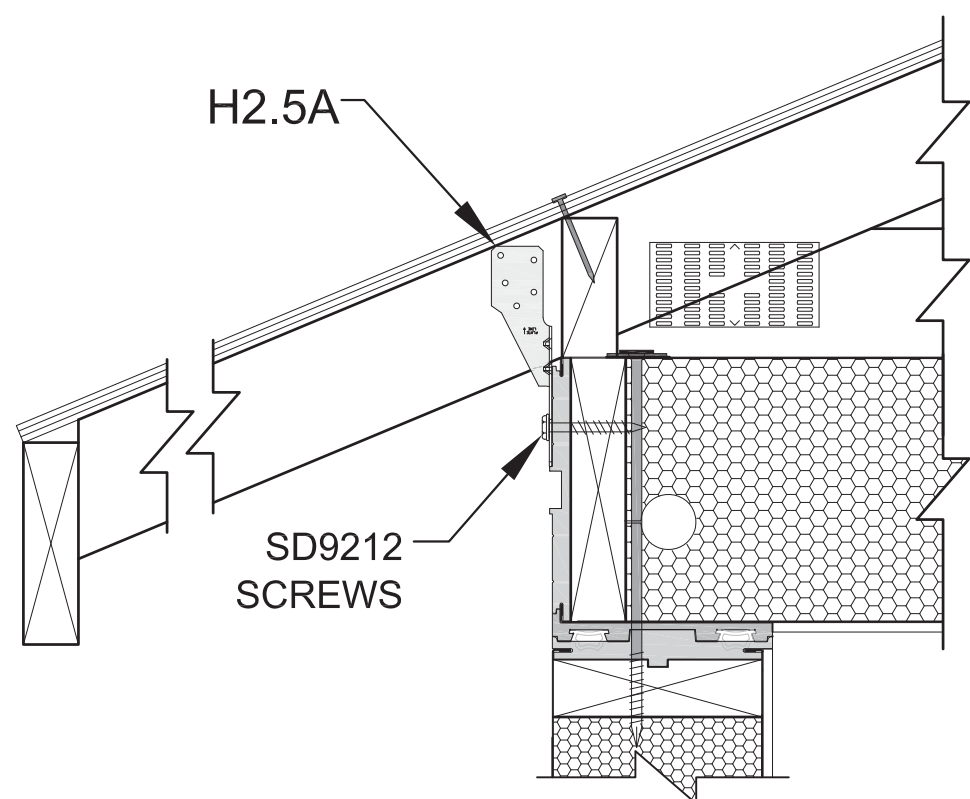
**A** LEFT EDGE OF MONOSLOPE  
SCALE: NONE

**B** RIGHT EDGE OF MONOSLOPE  
SCALE: NONE

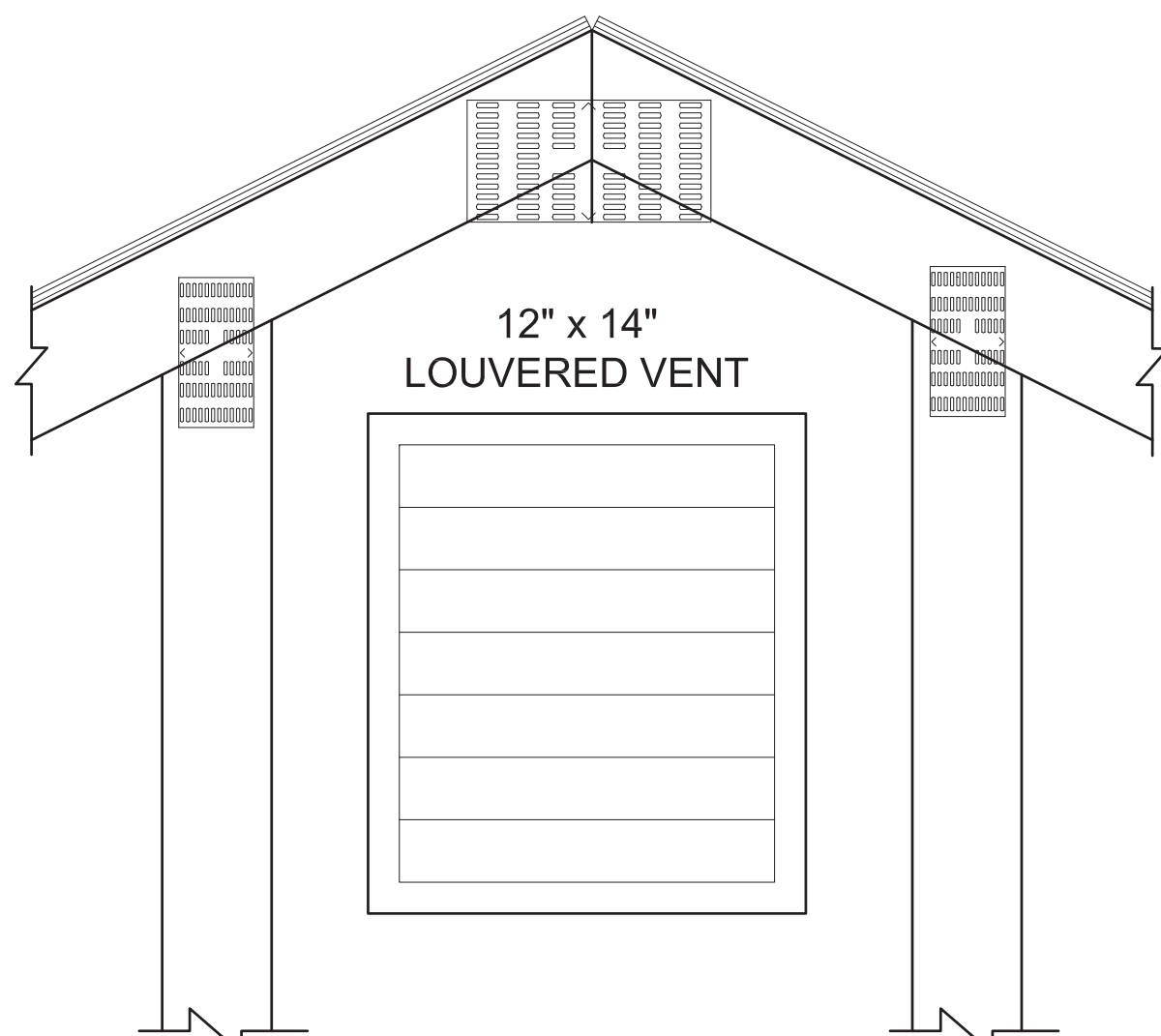
- NOTES:**
- 1) ASSUME VERTICAL TRUSS SUPPORT ONLY AT THE WALLS.
  - 2) ASSUME BOTTOM CHORD OF EACH TRUSS WILL BE RESTRAINED AGAINST LATERAL MOVEMENT IN BOTH HORIZONTAL DIRECTIONS BY THE A35 CLIPS INDATED ON THE TRUSS PROFILES. DESIGN EACH TRUSS TO TRANSMIT LATERAL WIND FROM THE TOP CHORD TO THE BOTTOM CHORD.



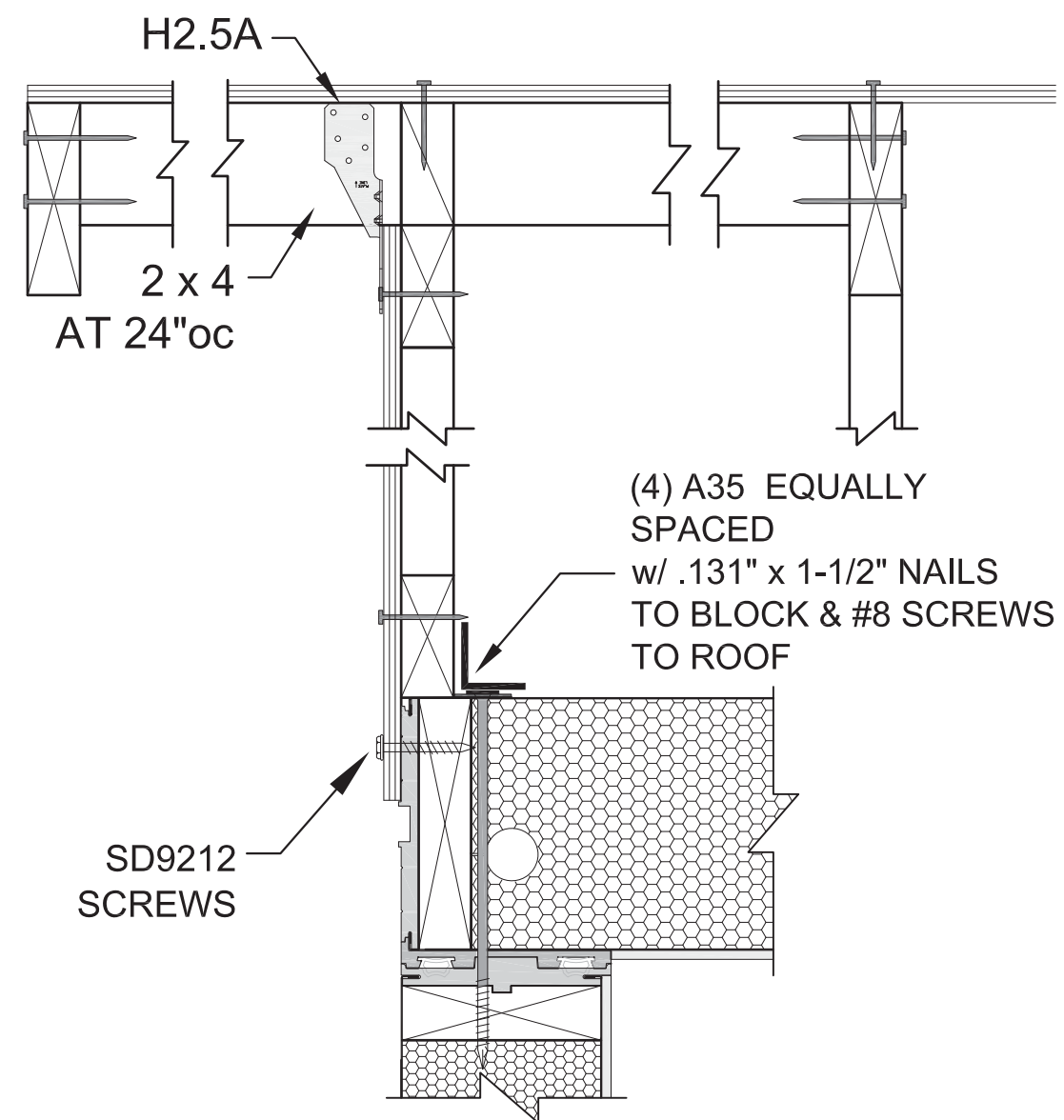
PRE-ENGINEERED WOOD TRUSS - GABLE



**C** GABLE TRUSS-TO-SIP ROOF AT EAVE  
SCALE: NONE



END TRUSS - VENTILATION OPENING



**D** END TRUSS TO ROOF EDGE  
SCALE: NONE

**NOTES:**

INFORMATION SHOWN IS SEMI-GENERIC & MUST BE VERIFIED FOR SPECIFIC SITE CONDITIONS.

FASTENERS SHOWN, BUT NOT SPECIFIED TO BE DESIGNED & SPECIFIED FOR SPECIFIC SITE LOCATIONS

PROPRIETARY AND CONFIDENTIAL  
THE INFORMATION CONTAINED IN THIS DRAWING IS THE SOLE PROPERTY OF BOXABL INC. ANY REPRODUCTION IN PART OR AS A WHOLE WITHOUT THE WRITTEN PERMISSION OF BOXABL INC. IS PROHIBITED.

SCALE: NONE

DRAWN BY: MN

REVIEWED BY:

REVISION:

ISSUE DATE: 10-17-22

SHEET: **T1**